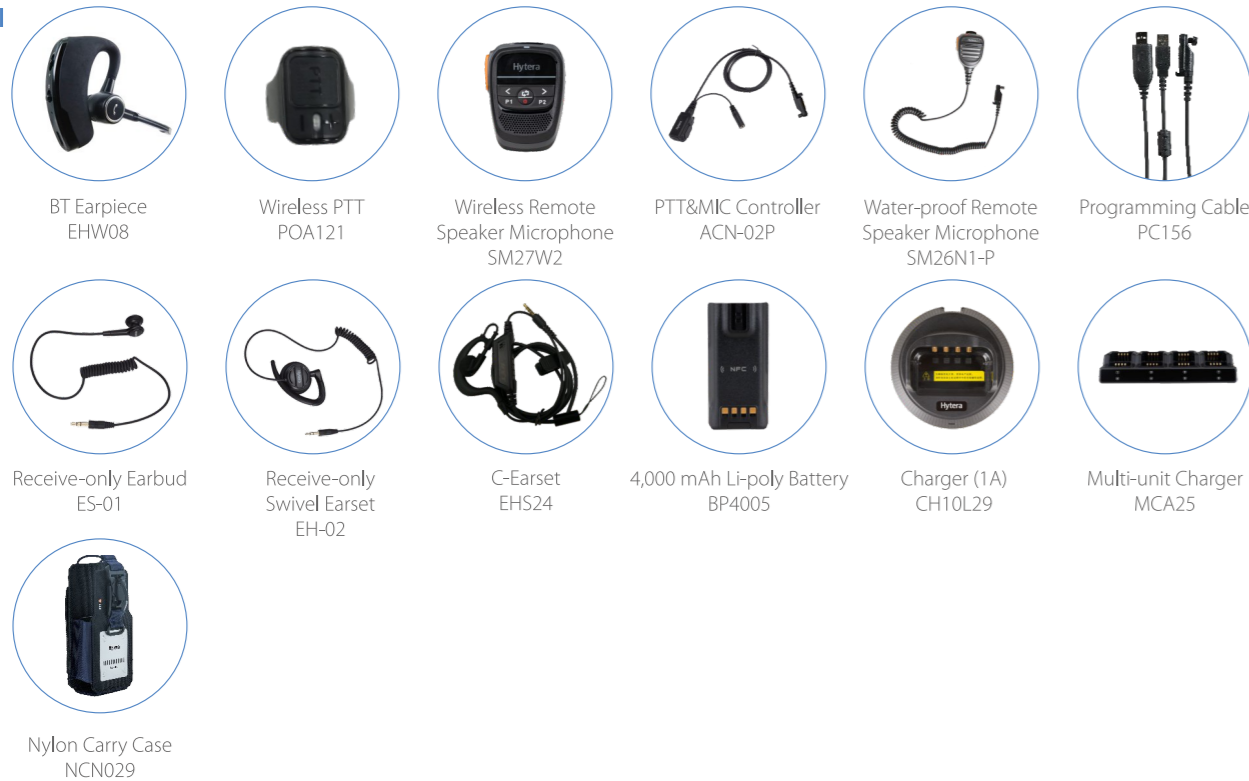


## Accessories

### Standard



### Optional



## Specifications

### Wireless Data Communication

|                |   |
|----------------|---|
| DMR/Analog     | 340-470MHz, 136-174MHz  |
| LTE            | 3GPP LTE<br>FDD-LTE: B1/B2/B3/B4/B5/B7/B8/B20/B26/B28<br>TDD-LTE: B34/B38/B39/B40/B41   |
| CDMA           | CDMA 1xRTT BCO<br>CDMA2000 1xEV-DO BCO  |
| WCDMA          | B1/B2/B4/B5/B8  |
| GSM            | 850/900/1800/1900MHz  |
| WLAN           | 802.11 a/b/g/n/ac, 2.4GHz/5GHz  |
| NFC (Optional) | 13.56MHz  |
| BT             | V4.2, BDR/EDR/BLE   |
| Positioning    | GPS/BDS/GLONASS/Galileo/QZSS/A-GPS<br>Position performance for open zone :<br>TTFF (Cold boot)< 1minute<br>Horizontal accuracy<5m( 95% probable at -130dBm) |

### Transceiver

|                              |  |
|------------------------------|--|
| Channel Spacing              | 25/20/12.5kHz  |
| TX Power                     | UHF: 1W/4W<br>VHF: 1W/5W   |
| RX Sensitivity               | Analog: 0.14uV/-124 dBm(12dB SINAD)<br>@12.5kHz (Typical)<br>Digital: 0.16uV/-123 dBm @BER5% (Typical) |
| Inter-modulation             | TIA-603: 70dB<br>ETSI: 65dB  |
| Blocking                     | 84dB   |
| Spurious Rejection           | TIA_603: 70dB<br>ETSI: 70dB  |
| Adjacent Channel Selectivity | TIA_603: 60dB@12.5kHz/70dB@20/25kHz<br>ETSI: 60dB@12.5kHz/70dB@20/25kHz                                |
| Frequency Stability          | ±0.5ppm  |
| Audio Output                 | 2W   |
| Audio Distortion             | ≤3%  |
| Digital Vocoder Type         | AMBE+2™  |

### General

|                                 |  |
|---------------------------------|--|
| Dimensions (H x W x D)          | 140 x 60 x 29.1mm  |
| Weight (with antenna & battery) | 325±5g   |
| AP Processor                    | 8-core, 1.8GHz   |
| Operating System                | Android 10   |
| Google Certification            | Google Mobile Services   |
| Memory                          | RAM: 3GB; ROM: 32GB eMMC<br>Supports up to 256GB with Micro SD card  |
| Ports                           | 13PIN Accessory/Charging Port  |
| Top Screen                      | 0.92"128x88 Color: black & white   |
| Main Screen                     | 3.6" 1280x720,<br>Capacitive, Touch Screen, Gloves Proofed, Passive Stylus   |
| Card Slots                      | 2 Nano SIM cards<br>1 Micro SD card<br>1 Encryption card for Narrowband  |
| Front Camera                    | 8MP, Fixed Focus   |
| Rear Camera                     | 13MP, Auto Focus   |
| Sensors                         | Proximity Sensor<br>Ambient Light Sensor<br>6-axis sensor (accelerometer + gyroscope)<br>Magnetometer<br>Accelerometer |

### Battery

|                        |                                  |
|------------------------|----------------------------------|
| Standard               | 2400 mAh Li-polymer, 7.7V(Rated) |
| Optional High Capacity | 4000 mAh, 7.7V(Rated)            |

### Video and Photo

|                         |   |
|-------------------------|---|
| Video File Types        | 3GPP(.3gp), MPEG-4(mp4)<br>QuickTime(.mov), WEBM(.webm), Windows Media(.asf,.wmv), RealMedia(.rmvb, .rm)<br>MPEG-PS(.mpg, .mpeg), MPEG-TS(.ts), AVI(.avi), Matroska(.mkv) |
| Image File Types        | JPEG(.jpg), GIF(.gif), PNG(.png), BMP(.bmp)   |
| Video Recording Quality | Front Camera:<br>1080P HD up to 30 frames per second(fps)<br>Rear Camera:<br>1080P HD up to 30 frames per second(fps)   |

### Audio

|            |   |
|------------|---|
| File Types | MP3(.mp3), WAV(.wav), 3GPP(.3gp), MPEG-4(.mp4,.m4a), ATDS raw AAC(.aac), MPEG-TS(.ts), FLAC(.flac), MIDI(.midi, .xmf, .mxmf), RTTTL/RTX(.rtttl, .rtx), OTA(.ota), iMelody(.imy), Ogg(.ogg), Matroska(.mka), QCELP(.qcp), RealMedia(.ra), Windows Media(.wma), AC3(.ac3) |
|------------|---|

### Environment

|                         |  |
|-------------------------|--|
| Dust and Water Proofing | IEC60529- IP68 (2m, 4h), IEC60529- IP66              |
| Shock and Vibration     | MIL-STD-810G   |
| ESD                     | IEC 61000-4-2 (Level 4), ±8kV (Contact), ±15kV (Air) |
| Operating Temperature   | -20°C - +60°C  |
| Storage Temperature     | -30°C - +80°C  |
| Humidity                | MIL-STD-810G, ≤ +65°C,95%RH                          |



**Hytera Communications Corporation Limited**  
Stock Code: 002583.Z

Address: Hytera Tower, Shenzhen Hi-Tech Industrial Park North, BeiHuan RD.9108#, Nanshan District, Shenzhen, P.R.C.  
Tel: +86-755-2697 2999 Fax: +86-755-8613 7139 Post: 518057  
Https: //www.hytera.com marketing@hytera.com



Hytera retains right to change the product design and specification. Should any printing mistake occur, Hytera doesn't bear relevant responsibility. Little difference between real product and product indicated by printing materials will occur by printing reason.

HYT, Hytera are registered trademarks of Hytera Communications Corp., Ltd.  
© 2023 Hytera Communications Corp., Ltd. All Rights Reserved.



**Dual-mode Rugged Radio**  
**PDC680**  
**ALL IN ONE ALL IN CONTROL**  
**MISSION CRITICAL FOCUSED**

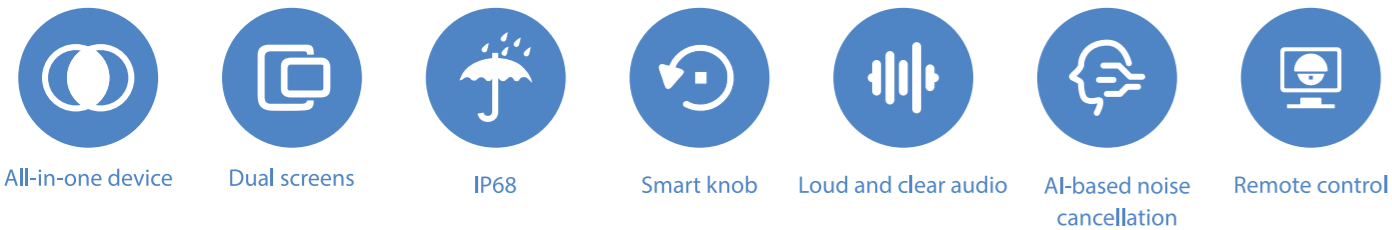
## Overview

Hytera PDC680 dual-mode rugged radio combines a mission-critical DMR radio with an Android-based smartphone in a single device. It harnesses the power of narrowband and broadband technologies to provide mission-critical voice call, photo and video taking, positioning, and more. This innovative radio enables seamless communications between DMR network and public network such as 2G, 3G, LTE, and WLAN.

As a professional rugged radio, the PDC680 is engineered for effortless usability. The ergonomic design on smart knob and keys and the modular design on UIs make it easy for you to accomplish tasks with one hand.



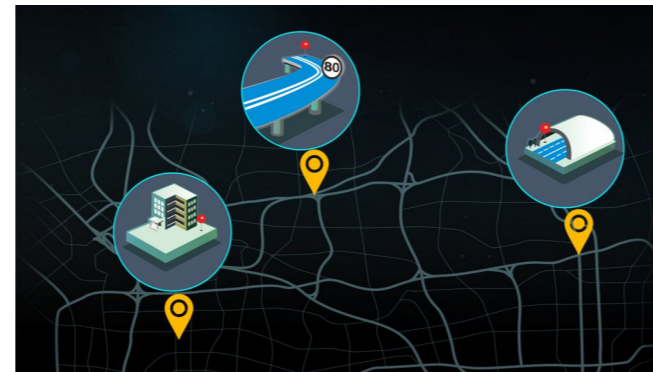
## Key Features



## Highlights

### Precise positioning

The PDC680 provides fast and accurate positioning to track people or devices, indoor and outdoor. The GPS, Galileo, GLONASS, QZSS, BDS, and A-GPS are used for outdoor positioning, while the location-based service (LBS) and WLAN are adopted for indoor positioning.



### Automatic switch

The PDC680 can automatically switch between DMR network and LTE network. Registering with both networks using the same ID, the PDC680 can always select the optimal one to deliver smooth and reliable voice communications everywhere, indoors or out.



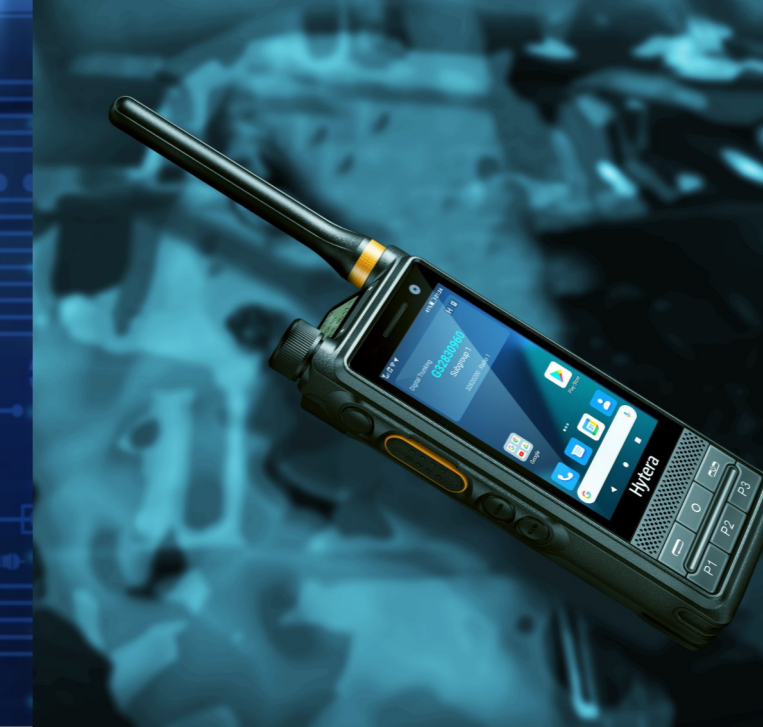
### Live streaming

Thanks to the dual HD cameras, the PDC680 allows you to capture on-site pictures and videos, and then send them to another radio or command center in real time to dramatically improve situational awareness. The PDC680 also supports the external camera.



### Purpose-built app

With the Android system, the PDC680 can support system-level apps developed by Hytera and other third-party apps. This helps you communicate and respond efficiently.



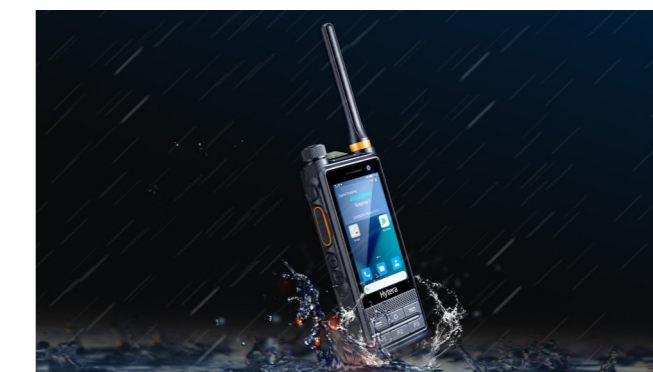
### Loud and clear audio

Using the enlarged front chamber technology and professional acoustic design, the PDC680 can output sound at up to 128 dB. To ensure crystal and clear audio in noisy environments, the PDC680 adopts AI-based noise cancellation, echo cancellation, and wind noise reduction technologies.



### Rugged and durable

Rated at IP68 and ESD IEC Level 4, the PDC680 withstands water, dust, and electrostatic discharge. It can also withstand 1.5-meter drop from all angles. The industrial-grade touchscreen stands up to continuous use in any weather. All these help the PDC680 perform well in harsh environments.



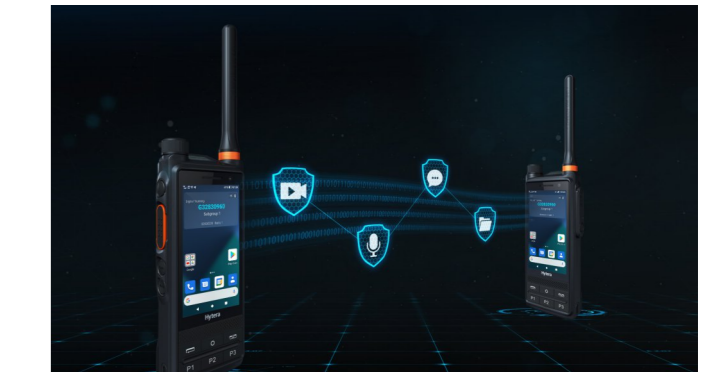
## All-in-one device

With highly integrated and modular design, the PDC680 combines a DMR radio and a smartphone into a single device. So you do not need to carry two separate handsets for accessing voice, data, video, and more.



## All-round security assurance

The PDC680 can secure the voice and data through authentication, software and hardware encryption, or more. TrustZone protects the system; full-disk encryption (FDE) protects the user data; air interface encryption (AIE) and end-to-end encryption (E2EE) protect the voice and data communication; and remote control helps you manage radios.



## Smart management

You can remotely manage radios in batches, including upgrade, programming, permission control, key configuration, app management, device health management, and data backup and recovery.

